

FR Wood Blinds

FR Wood Blinds from Hunter Douglas combine the distinctive beauty of real wood with slats rated to pass NFPA 701 standards for flame retardance. This premier collection offers a selected range of exotic wood designs created from plantation-raised African hardwood.

KEY FEATURES:

- Passes NFPA 701 for all contract applications
- Durable head rail mechanism provides smoother operation and long life performance
- Optional de-Light™ feature delivers privacy and daylight control by placing cord holes toward the back of the slat to prevent light leakage
- Matching wood valance and bottom rail
- Lifetime limited warranty



Color Selection



Natural Zebrawood



Black Zebrawood



Burmese Teak



Cherry



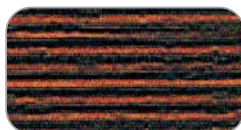
Ebony



Oak



Teak



Wenge



White Beech



Bamboo

To Contact Us:

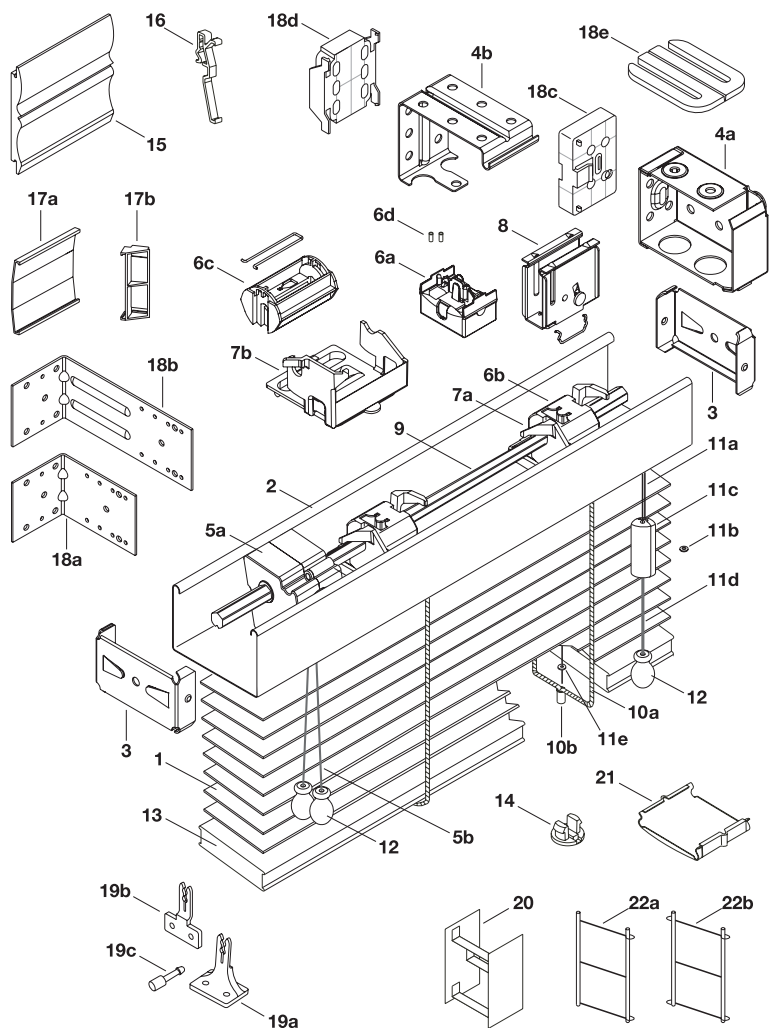
12400 Stowe Drive
Poway, CA 92064

Tel: 800.727.8953 Fax: 800.205.9819

www.hunterdouglascontract.com/windowcoverings

HunterDouglasContract

WINDOW COVERINGS



Standard Components:

1. Slat
2. Headrail
3. Headrail End Lock
- 4a. Installation Bracket
- 4b. Intermediate Support Bracket
- 5a. Cord Tilter
- 5b. Tilt Cord 1.4mm
- 6a. Tape Roll/Slot Type
- 6b. Tape Roll/Bead Type
- 6c. Wide Tape Roll and Wire Form
- 6d. "X" Tape Locator
- 7a. Cable Tape Roll Support
- 7b. Wide Tape Roll Support
8. Cordlock
9. Tiltrod
- 10a. No Loop Cable Tape
- 10b. 2" Cable Tape Grommet
- 11a. Lift Cord 1.4mm
- 11b. Cord Stop Washer
- 11c. Cord Stop
- 11d. Tassel Cord 2.2mm
- 11e. Lift Cord Grommet
12. Tassel
13. Bottom Rail
14. Tape Button
15. Standard Valance
16. Valance Clip
- 17a. Valance Splice
- 17b. Valance Corner Clip

Optional Components:

- 18a. Short Extension Bracket
- 18b. Long Extension Bracket
- 18c. Installation Bracket Spacer
- 18d. Intermediate Bracket Spacer
- 18e. Bracket Shim
- 19a. Hold-Down Bracket (Sill)
- 19b. Hold-Down Bracket (Jamb)
- 19c. Hold-Down Pin
20. Decorative Tape
21. Tape Lock
- 22a. Single Loop Cable Tape (de-Light™)
- 22b. Double Loop Cable Tape (de-Light™)

Product Specifications

PART 2 – PRODUCTS

2.01 ACCEPTABLE MANUFACTURER

A. Hunter Douglas Contract / 12400 Stowe Drive / Poway, CA 92064 / Phone: 800-727-8953 Fax: 800-205-9819 / Website: www.hunterdouglascontract.com or architect approved equivalent.

B. Product substitutions must be approved by architect minimum of 30 days prior to close of bid.

2.02 2" HORIZONTAL WOOD BLINDS

A. PRODUCT: Hunter Douglas Contract
2" Horizontal FR Wood Blind

B. MATERIALS:

1. SLATS: 2" wide x 1/8" thick, cut from quality selected hardwood of engineered wood veneer. Furnish not less than nominal 6.9 slats per foot (non-FR cloth tapes 7.2 slats per foot) to ensure tight closure and light control. Finish with manufacturer's standard colors selected by architect from manufacturer's available contract colors.

2. SLAT SUPPORT: Braided ladders of 100% polyester yarn color compatible with slats and spacing of ladder no more than 44mm. Optional non-FR cloth tapes constructed of high strength polyester-cotton blend webbing and spacing of no more than 44mm. Tapes spaced to comply with industry standards for size and weight of blind.

3. HEADRAIL: U-shaped profile with rolled edges, measuring 1 1/2" x 2 1/4" x .024" constructed of corrosion resistant steel and providing a sleek low profile design. Internally fit with components required for specified performance and designed for smooth, quiet, trouble-free operation. Headrail finish to be standard baked-on polyester and to coordinate with slats. Ends fitted with zinc-coated steel end lock with adjustable tab for centering blinds.

4. BOTTOM RAIL: 2" wide x 5/8" thick trapezoidal shape quality selected hardwood of engineered wood veneer. Color-coordinated engineered polymer tape buttons secure the ladder and cord. Finish to be manufacturers standard stained, bleached and/or dyed finish in colors to match slats.

5. LIFTING MECHANISM: Engineering polymer and galvanized steel housing cordlocks with polymer roller bearing and steel locking dogs, two-ply polyester cord filler in braided polyester jacket lift cords meet or exceed commercial specification 1029.86, with cord stop/ tassel. Located on either side of individual blind unit as per architect's request.

6. TILTING MECHANISM: Permanently lubricated and fully enclosed standard cord tilt holds and tilts slats at any angle. Solid steel, corrosion resistant tilt rod. Located on either side of individual blind unit as per architect's request.

7. MOUNTING HARDWARE: Manufacturer's standard .030" steel box brackets with baked-on polyester finish to match headrail with additional support brackets for blinds over 48" wide.

8. VALANCE: Crafted of selected hardwoods of engineered wood veneer, stained, bleached and/or dyed finish in colors to match slats.

9. ADDITIONAL AVAILABLE OPTIONS: de-Light™ feature, 2 or 3 blinds on 1 headrail, hold down brackets, cutouts, non-FR cloth tapes.

2.03 FABRICATION

A. Blind measurements shall be accurate to within ± 1/8" or as recommended in writing by manufacturer.

2.04 FINISHES

A. SLAT finish selection from the following: Black Zebra wood, Teak, Burmese Teak, Oak, White Beech, Wenge, Bamboo, Ebony, Natural Zebra wood, Cherry.

B. SLAT SUPPORT braided ladders shall be color coordinated with slat. Optional non FR cloth tapes available finishes: 048 Black, 082 Camel, 293 Bordeaux, 302 Taupe, 336 Chestnut, 378 Sable, 430 Amber, 450 White, 572 Spruce, 685 Indigo, 830 Almond, 973 Antique White, 418 Buttercup, 500 Celery, 504 Moss, 627 Heritage Blue, 292 Terracotta, 769 Eggplant.