

GlacierScreen FR fabrics preserve indoor air quality through an innovative new manufacturing process that eliminates nearly all odors due to off-gassing by avoiding the use of VOC-emitting substances.

Key Features

- Certification pending as a low-emissions product for indoor air quality.
- Contains no brominated flame retardants or heavy metals.
- Fabrics are colorfast and reinforced against yellowing or reddening due to heat and UV exposure.
- Tested and certified to meet the Oeko-Tex Standard 100 for the assessment of harmful substances in textiles.
- Passes NFPA 701 testing for small-scale flammability.
- Proven sterilization against bacteria, fungi, and viruses. Silver nano sterilization verified for anti-microbial performance.
- Properties tested to remain in the long term, even after washing.



GlacierScreen™ Fabric Selection

HD2001 Duotone | 1% Openness | 78% PVC, 22% Polyester



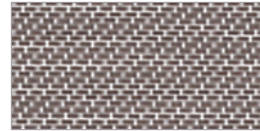
White / White



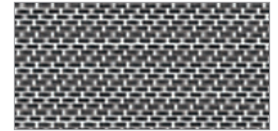
White / Linen



White / Sand

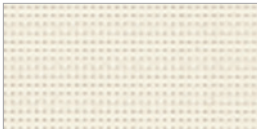


White / Bronze



White / Black

HD1005 | 5% Openness | 78% PVC, 22% Polyester



White / White



White / Linen



White / Sand



White / Pearl



White / Gray



White / Black



Black / Pearl



Black / Bronze



Black / Black

To Contact Us:

12400 Stowe Drive
Poway, CA 92064

Tel: 800.727.8953 Fax: 800.205.9819

www.hunterdouglascontract.com/windowcoverings

HunterDouglasContract

WINDOW COVERINGS

Specifications:

Composition: 78% PVC, 22% Polyester
Width: 114" (290 cm)
Roll Length: 32.8 ly (30 lm)

Weight: 1% HD2001 14.9 oz/yd² (505 g/sm +/- 5%)
5% HD1005 14.6 oz/yd² (495 g/sm +/- 5%)
Thickness: 0.0268" (0.68 mm)
Fire Classification: NFPA 701-99 Small Scale

Fenestration Properties:

HD2001 Duotone 1% Openness							SC (internal)			
Color Name		Ts	Rs	As	Tuv	Tv	O-F	1/8" CI	1/4" CI	1/4" H.A.
White / White		20	64	16	1	13	< 0.5%	0.36	0.36	0.33
White / Linen	Light Side	18	62	20	1	12	1	0.37	0.37	0.34
	Dark Side	18	59	23	1	12	1	0.39	0.38	0.35
White / Sand	Light Side	14	59	27	1	8	< 0.5%	0.38	0.38	0.34
	Dark Side	14	47	39	1	8	< 0.5%	0.46	0.45	0.38
White / Bronze	Light Side	7	52	41	1	5	< 0.5%	0.41	0.40	0.35
	Dark Side	7	29	64	1	5	< 0.5%	0.57	0.55	0.43
White / Black	Light Side	6	50	44	1	5	< 0.5%	0.42	0.41	0.36
	Dark Side	6	24	70	1	5	< 0.5%	0.60	0.58	0.45

HD1005 5% Openness							SC (internal)			
Color Name		Ts	Rs	As	Tuv	Tv	O-F	1/8" CI	1/4" CI	1/4" H.A.
White / White		23	63	14	5	18	6	0.37	0.37	0.34
White / Linen		21	60	19	5	16	5	0.39	0.39	0.35
White / Sand		15	48	37	5	12	6	0.46	0.45	0.38
White / Pearl		17	52	31	5	13	5	0.44	0.43	0.37
White / Gray		10	36	54	5	10	6	0.53	0.51	0.41
White / Black		8	27	65	5	9	5	0.59	0.56	0.44
Black / Pearl		7	18	75	5	8	6	0.65	0.62	0.47
Black / Bronze		6	6	88	5	7	5	0.73	0.69	0.50
Black / Black		6	4	90	5	7	5	0.74	0.70	0.51

The solar transmittance (Ts), solar reflectance (Rs), solar absorptance (As), ultra-violet transmittance (Tuv), visible light transmittance (Tv) and Openness-Factor (O-F) were determined for the fabric alone. The Shading Coefficients (SC) were determined for the fabric used with a single light of 1/8" double strength glass, a 1/4" clear plate and a 1/4" heat absorbing (H.A.) plate. The Shading Coefficients are for the fabric hung internally at zero degree profile angle unless otherwise indicated. The data and calculated results are presented in the above table. The Ts, Rs, As, Tuv, Tv and O-F are expressed as percentages.

The samples were tested in accordance with ASHRAE Standard 74-1988, "Methods of Measuring Solar-Optical Properties of Materials."