

# FR Alternative Wood Blinds

FR Alternative Wood Blinds from Hunter Douglas offer the look of luxurious hardwood blinds and are rated to pass NFPA 701. Delivering value at a cost-effective price, slats are available in a selection of finishes and colors, including attractive and authentic wood grains.

## KEY FEATURES:

- Ideal for areas with high humidity, extreme temperature, and direct sunlight
- Passes NFPA 701 for all contract applications
- Durable head rail mechanism provides smoother operation and long life performance
- Optional de-Light™ feature delivers privacy and daylight control by placing cord holes toward the back of the slat to prevent light leakage
- A variety of design options including valances and decorative tapes
- Lifetime limited warranty



## Color Selection



**10206900**  
Bone Woodgrain



**10206901**  
Cream Woodgrain



**10206906**  
Golden Oak Woodgrain



**10206908**  
Mahogany Woodgrain



**10206909**  
Natural Woodgrain



**10206910**  
Pecan Woodgrain



**10206911**  
Sand Woodgrain



**10206912**  
Sugar Maple Woodgrain



**10206913**  
Warm Cherry Woodgrain



**10206902**  
White Woodgrain

### To Contact Us:

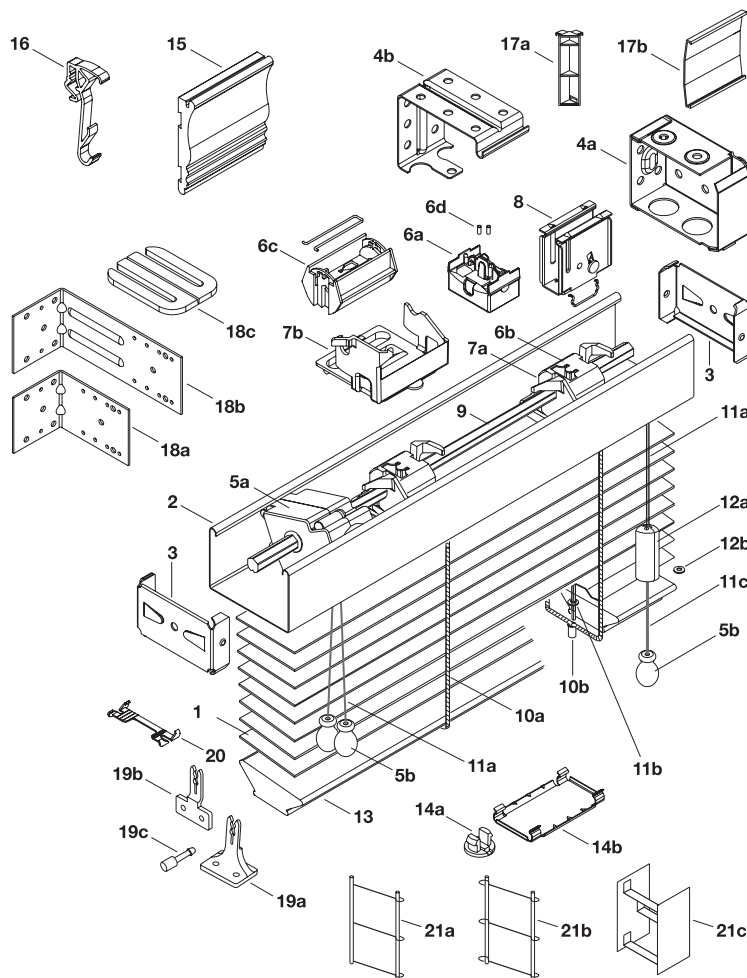
12400 Stowe Drive  
Poway, CA 92064

Tel: 800.727.8953 Fax: 800.205.9819

[www.hunterdouglascontract.com/windowcoverings](http://www.hunterdouglascontract.com/windowcoverings)

**HunterDouglasContract**

WINDOW COVERINGS



### Standard Components:

1. Slat
2. Headrail
3. Headrail End Lock
- 4a. Installation Bracket
- 4b. Intermediate Support Bracket
- 5a. Cord Tilter
- 5b. Wood Tassel
- 6a. Tape Roll/Slot Type
- 6b. Tape Roll/Bead Type
- 6c. Low Profile Cloth Tape Roll
- 6d. Cable Tape Grommet
- 7a. Tape Roll Support
- 7b. Wide Tape Roll Support
8. Cordlock
9. Tiltrod
- 10a. Cable Tape Ladder
- 10b. 2" Cable Tape Grommet
- 11a. Polyester Cord 1.4mm
- 11b. Lift Cord Grommet
- 11c. Polyester Cord 2.2mm
- 12a. Cylindrical Cord Stop
- 12b. Cord Stop Washer
13. Bottom Rail
- 14a. Tape Button
- 14b. Tape Lock
15. Valance
16. Valance Clip
- 17a. Valance Corner Clip
- 17b. Valance Splice

### Optional Components:

- 18a. Short Extension Bracket
- 18b. Long Extension Bracket
- 18c. Bracket Shim
- 19a. Hold-Down Bracket (Sill)
- 19b. Hold-Down Bracket (Jamb)
- 19c. Hold-Down Pin
20. Tape Spacer
- 21a. Single Loop Cable Tape (de-Light™)
- 21b. Double Loop Cable Tape (de-Light™)
- 21c. Cotton Tape Ladder

## Product Specifications

### PART 2 – PRODUCTS

#### 2.01 ACCEPTABLE MANUFACTURER

**A.** Hunter Douglas Contract / 12400 Stowe Drive / Poway, CA 92064 / Phone: 800-727-8953 Fax: 800-205-9819 / Website: www.hunterdouglascontract.com or architect approved equivalent.

**B.** Product substitutions must be approved by architect minimum of 30 days prior to close of bid.

#### 2.02 2" HORIZONTAL FR ALTERNATIVE WOOD BLINDS

**A. PRODUCT:** Hunter Douglas 2" Horizontal FR Alternative Wood Blind

#### B. MATERIALS:

**1. SLATS:** 2" wide x 1/8" thick blend of polymer and specially selected composite materials with consistent color throughout eliminating slat end touch-up. Furnish not less than nominal 7.2 slats per foot to ensure tight closure and light control. Finish with manufacturer's standard colors selected by architect from manufacturer's available contract colors.

**2. SLAT SUPPORT:** Braided ladders of 100% polyester yarn color compatible with slats and spacing of ladder no more than 44mm. Optional non-FR cloth tapes constructed of high strength polyester-cotton blend webbing and spacing of no more than 44mm. Tapes spaced to comply with industry standards for size and weight of blind.

**3. HEADRAIL:** U-shaped profile with rolled edges, measuring 1 1/2" x 2 1/4" x .024" constructed of corrosion resistant steel and providing a sleek low profile design. Internally fit with components required for specified performance and designed for smooth, quiet, trouble-free operation. Headrail finish to be standard baked-on polyester and to coordinate with slats. Ends fitted with zinc-coated steel end lock with adjustable tab for centering blinds.

**4. BOTTOM RAIL:** 2" wide x 9/16" thick blend of polymer and specially selected composite materials rectangular in shape. Color-coordinated engineered polymer tape buttons secure the ladder and cord. Finish to be manufacturer's standard colors or stained finish to match slats

**5. LIFTING MECHANISM:** Engineering polymer and galvanized steel housing cordlocks with polymer roller bearing and steel locking dogs, two-ply polyester cord filler in braided polyester jacket lift cords meet or exceed commercial specification 1029.86, and fracture-resistant polymer cord-stop color-coordinated to slat. Located on either side of individual blind unit as per architect's request.

**6. TILTING MECHANISM:** Permanently lubricated and fully enclosed standard cord tilt holds and tilts slats at any angle. Solid steel, corrosion resistant tilt rod. Located on either side of individual blind unit as per architect's request.

**7. MOUNTING HARDWARE:** Manufacturer's standard .030" steel box brackets with baked-on polyester finish to match headrail with additional support brackets for blinds over 48" wide.

**8. VALANCE:** Crafted of a blend of polymer and specially selected composite materials with finish to match slats.

**9. ADDITIONAL AVAILABLE OPTIONS:** de-Light™ feature, 2 or 3 blinds on 1 headrail, hold down brackets, cutouts, non-FR cloth tapes.

#### 2.03 FABRICATION

**A.** Blind measurements shall be accurate to within ± 1/8" or as recommended in writing by manufacturer.

#### 2.04 FINISHES

**A. SLAT** finish selection from the following: 10206900 Bone Woodgrain, 10206901 Cream Woodgrain, 10206902 White Woodgrain, 10206906 Golden Oak Woodgrain, 10206908 Mahogany Woodgrain, 10206909 Natural Woodgrain, 10206910 Pecan Woodgrain, 10206911 Sand Woodgrain, 10206912 Sugar Maple Woodgrain, 10206913 Warm Cherry Woodgrain.

**B. SLAT SUPPORT** braided ladders shall be color coordinated with slat. Optional non-FR cloth tapes available finishes: 048 Black, 082 Camel, 293 Bordeaux, 336 Chestnut, 378 Sable, 413 Hunter Green, 504 Moss, 627 Heritage Blue, 628 Indigo, 830 Almond, 909 Country Redwood, 973 Antique White, 450 White, 418 Buttercup, 302 Taupe, 430 Amber, 292 Terracotta, 500 Celery, 572 Spruce, 064 Bronze.